



FEEDER CATTLE GRADING

ANSC 406



TERMINOLOGY for WEIGHT VARIANCE

- ❑ Calves are **EVEN**- this means that there is **less than 150lbs.** variation in weight from the light to heavy ends on yearling cattle and **100lbs.** of variation in calves.
- ❑ Calves are **UNEVEN**- means weight variance in yearling cattle is **between 150 to 200lbs.** while calves variation should be between **100 to 150lbs.**
- ❑ Calves are **VERY UNEVEN**- means that weight variance in yearling cattle is **over 250lbs.** and calves variation is **over 150lbs.**

TERMINOLOGY for AGE & WEIGHT

- ❑ **SHORT AGE**- Do not use the term short aged on yearling cattle. **Short age is used on calves only.** It is referred to a calf that has had an excellent home, is in fleshy condition and **is still on it's mother.** If the calf has been weaned for 30-45 days then it would be listed as a weaned medium aged calf.
- ❑ **MEDIUM AGE**- A calf that has had an **average** home, has not been starved, but has not had above average growing conditions.
- ❑ **LONG AGED**- A calf that has had very poor growing conditions. This animal would be **over 18-20 months of age when going into the feedlot.**

TERMINOLOGY for FLESH CONDITIONS

- DEAD POOR**- Do not try to sell this type. Feed should be bought and cattle developed.
- THIN**- These are **lightly fleshed** due to possible poor pasture conditions.
- LIGHT MEDIUM (SLIGHTLY FLESHY)**- These are calves that are in **ideal stocker flesh**. Strong, healthy calves carrying very little fat.
- MEDIUM (FLESHY)**- A very wide variance can occur depending on the season.
- HEAVY MEDIUM (VERY FLESHY)**- Calves are **very fleshy (fat)** and carrying above average condition for the season.

CONDITION SCORES IN FEEDER CATTLE

- THIN
- MEDIUM
- FLESHY



TERMINOLOGY for BREED & COLOR

- OKIES** (NO. 1, NO. 2, NO. 3)- **Predominantly English** and **possible cross** with Dairy or Exotic.
- EXOTICS** (Exotic NO. 1, NO. 2, NO. 3)- Cross of at least **3/4 Continental Breeding**
- BRAHMAN CROSSES** (Crossbred NO.1, Crossbred NO. 2, Crossbred NO. 3.) **1/8 to 3/4 Brahman** with 7/8 to 1/4 of any other breeds.
- PUREBRED or HIGH GRADE** (Brangus NO. 1, Hereford NO. 2, Brahman NO> 1-1/2, Holsteins)-Use breed name and grade classification.

OTHER GRADING COMMENTS

- SHORTS- (Any Breed or X)
- Black Baldy, Blacks
- Humpy
- Feathernecks, Whiteface
- Empty (0% Shrink)
- Average (2-4% Shrink)
- Full (5+ % Shrink)

USDA FEEDER CATTLE GRADING

Feeder Calves and Yearlings and are evaluated by a combination of:

- Frame Size
- Muscling

Under ordinary development & feeding conditions, different framed animals reach slaughter potential at different weights.

FRAME SIZES

- SMALL
- MEDIUM
- LARGE



FRAME SIZE - Large



Tall and long bodied
½ inch fat:
Steers over 1250 lbs.
Heifers over 1150 lbs.

Frame Size - Medium



Slightly tall
Slightly long bodied
½ inch fat :
Steers 1100 to 1250
Heifers 1000 to 1150

Frame Size - Small



Not as tall as Medium
Short bodied
½ inch fat:
Steers less than 1100
Heifers less than 1000







FEEDER CATTLE MUSCLING

□ #1 Muscling. Moderately thick throughout; showing a rounded appearance through the back & loin with moderate width between the legs.

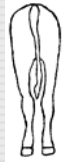


□ #2 Muscling. Slightly thick throughout; showing a rounded appearance through the back and loin with slight width between the legs.



Muscling Continued

□ #3 Muscling. Thin through the forequarter and the middle part of the rounds; back and loin have a sunken appearance; legs are set close together.

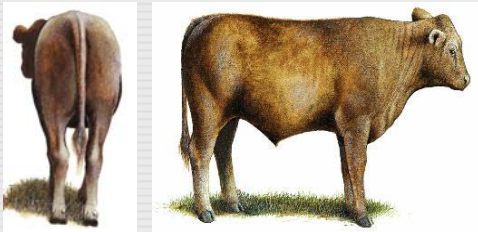


□ #4 Muscling. Less thickness than the minimum requirements for #3.



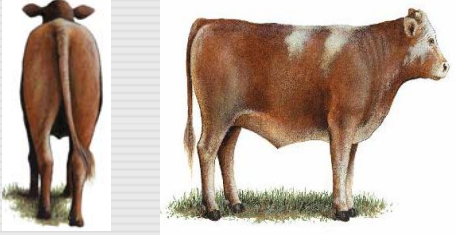
USDA Feeder Cattle Grades

Muscle Thickness Scores – No. 1



USDA Feeder Cattle Grades

Muscle Thickness Scores – No. 2



USDA Feeder Cattle Grades

Muscle Thickness Scores – No. 3



USDA Feeder Cattle Grades

Muscle Thickness Scores – No. 4





Inferior Grade

- Mis-management!
 - Disease
 - Parasitism

- Double Muscling





FEEDER CATTLE FACT SHEET

FACTOR		PREMIUM/DISCOUNT
Base Price= \$120.00		
Weight:	Par 600lbs	6 cent premium cash pound under 600# 4 cent discount cash pound over 600#
Frame:	Par Medium 50% Large 50%	-\$5.00/cwt each 1/2 grade
Muscling	Par Number 1	(Cumulative) 2+ -\$4.00/cwt. 2 -\$5.00/cwt. 2- -\$6.00/cwt
Fleshing Condition	Medium	Thin +\$3.00 Fleshy -\$5.00
Sex	Par Steer	Heifer \$-8.00 Bull \$-5.00/cwt
Horns		-\$3.00/cwt
Blue/Pink Eye		-\$2.00/cwt
Severe Ring Worm		-\$2.00/cwt

EXAMPLE FOR CREATING FEEDER CATTLE PRICE

EXAMPLE:

600 lb. M+ 1 Thin Steer- Base Price	\$120.00
Weight	Par
Frame	Par
Muscling	Par
Flesh	+ 3.00
Sex	Par
Final Price	\$123.00
